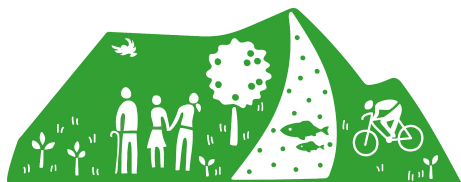


Feasibility Study for a Multi-Use Path in Philipstown

Presentation to the
Village of Cold Spring Board of Trustees

February 8, 2023



PHILIPSTOWN

Trails Committee

Weston & SampsonSM
transform your environment

who we are

- The Philipstown Trails Committee is a Town Advisory Committee.
- **Purpose:** Advises the Town of Philipstown on how to improve the ability for residents to safely get around Town without recourse to motorized transit.

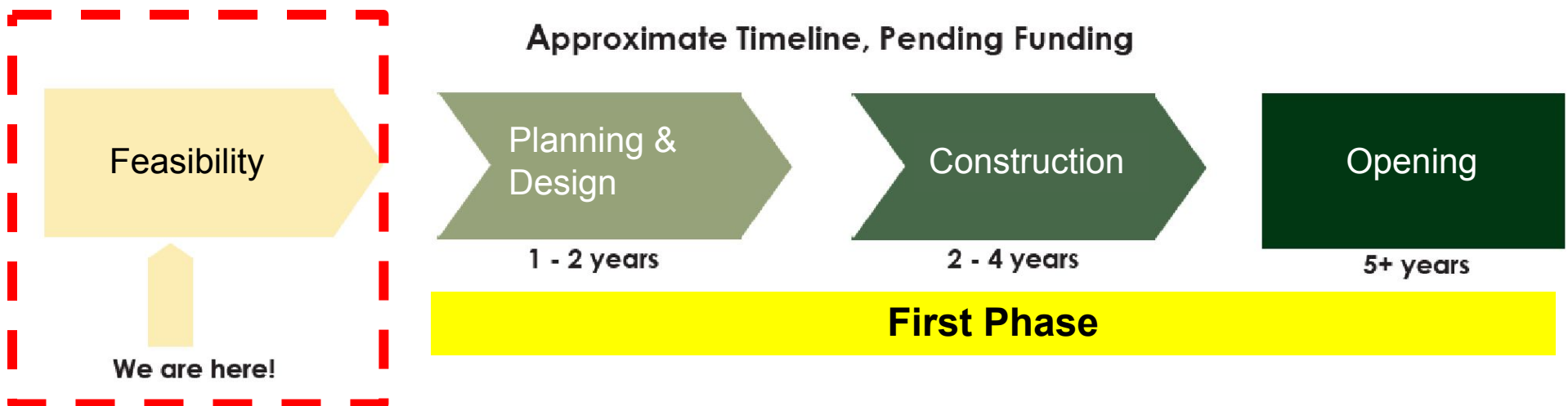
Guiding principles of the PTC:

- Neighborhood Connection & Collaboration
- Equitable & Complete Streets
- Environmental Responsibility
- Building Upon Assets



What is a Feasibility Study?

- The purpose of this study is to analyze and examine the feasibility of a path from Cold Spring to Garrison and important neighborhood amenities in between.
- The intent of the project is to gather information to assess the opportunities and challenges of route options for a path.





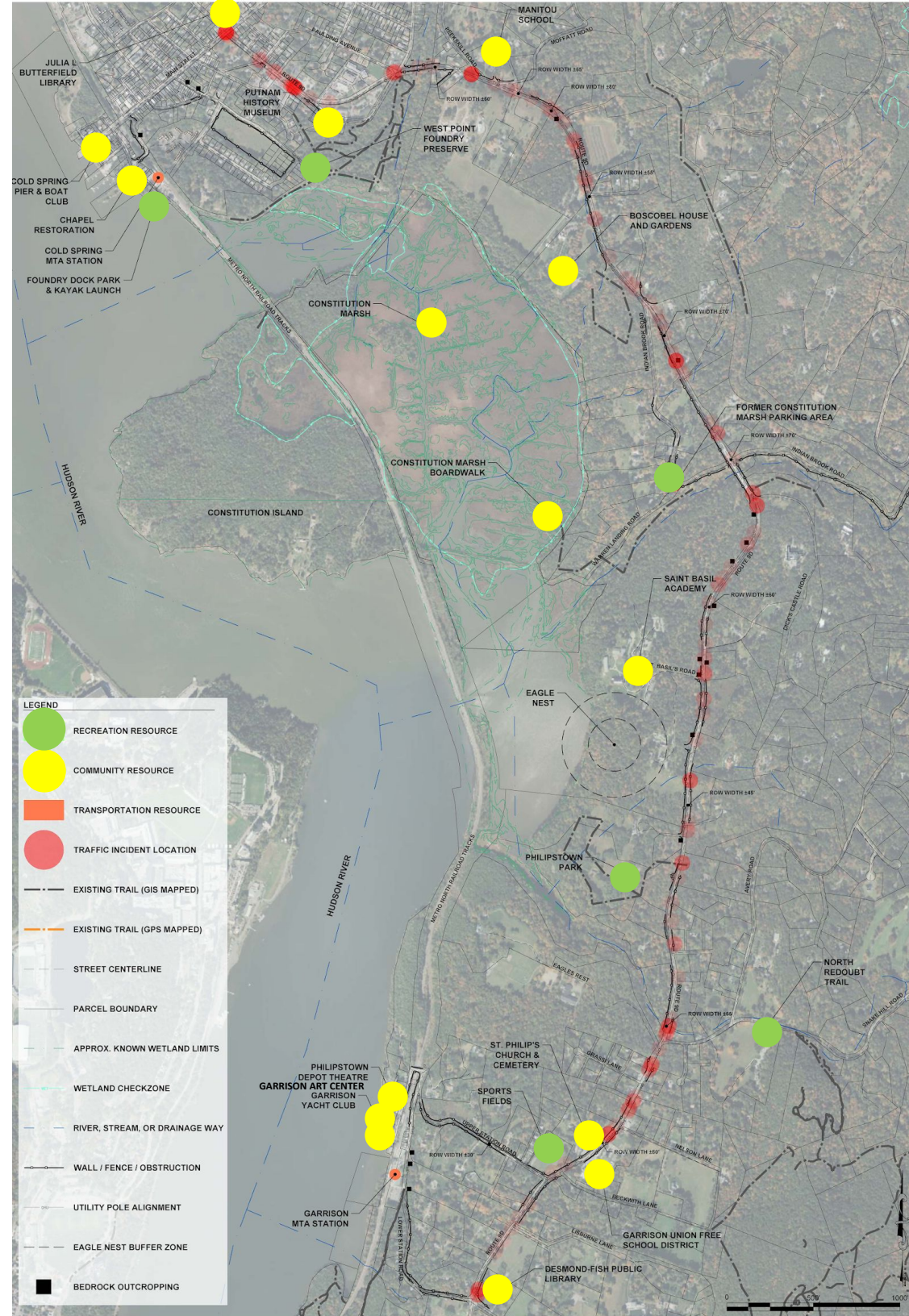
Project Area

The goal is to link important public + community spaces including:

- Neighborhoods
- Schools
- Libraries
- Grocery Store & Shopping
- Post Office
- Farmers Market
- Train Stations
- Medical + Pharmacy

Existing Conditions Summary

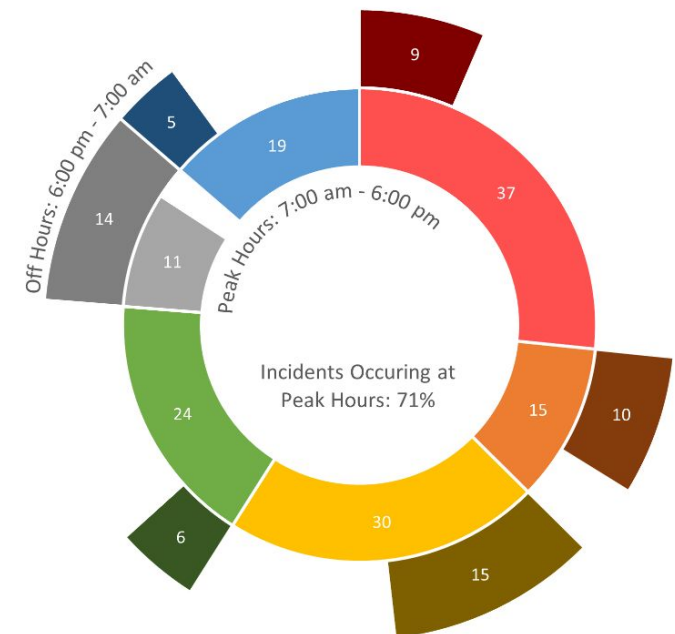
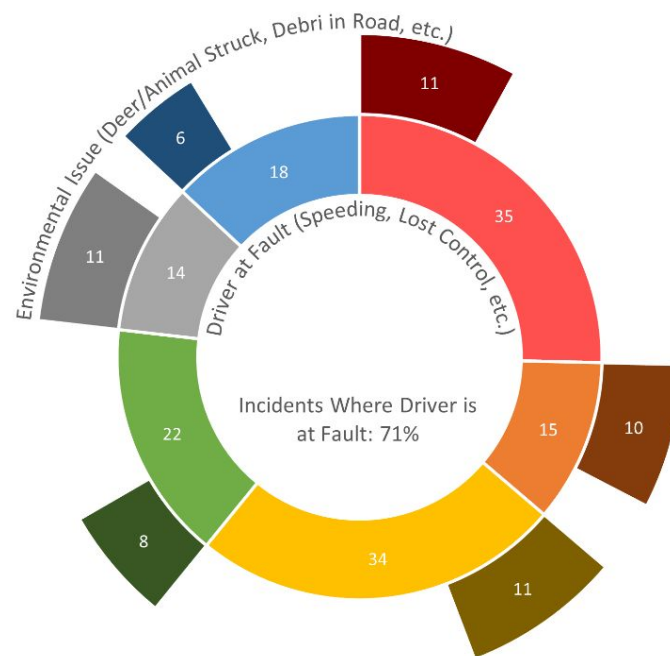
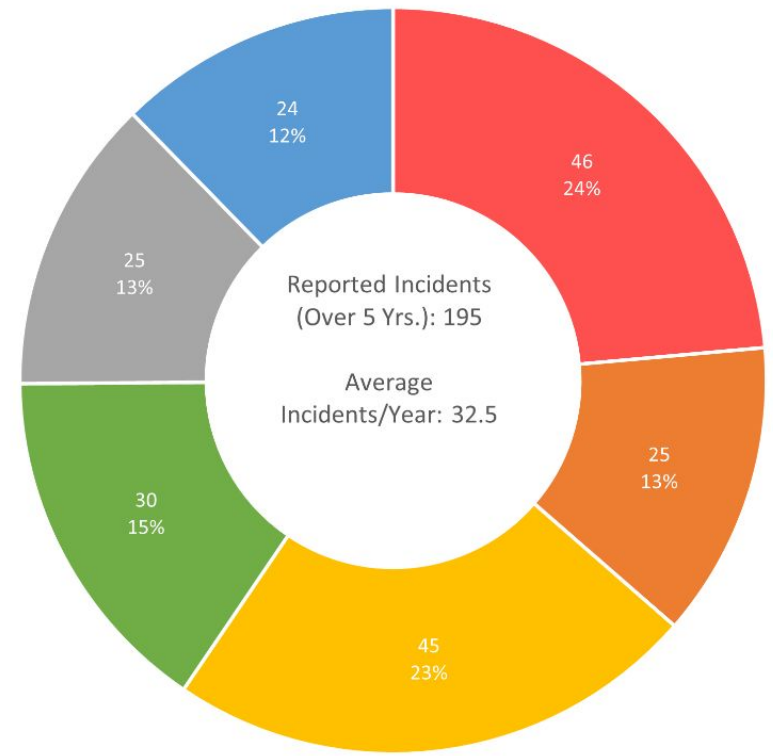
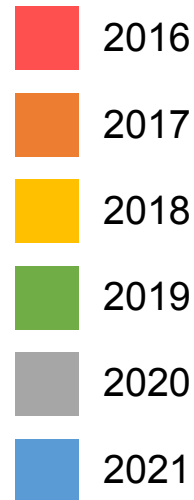
- Parcels, wetlands, streams & topography base mapping (GIS)
- Field Investigation
 - Recreational/community resource areas
 - Variable site context
 - Rock outcroppings
 - Stream crossings
 - Proximity to wetlands, Constitution Marsh
 - Environmental Resources (eagle nest)
 - Variable ROW widths
 - Large areas of fence/ wall obstruction
 - Overhead utilities along both sides of several roads
 - Frequent traffic incidents along Route 9D



9D Traffic Data

High Traffic Volume & Speeds along Route 9D

- Average of **32.5 crashes / year** over last 5 years
- **71%** of incidents caused by driver error
- **71%** of incidents occurred during peak travel hours (7:00 a.m. – 6:00 p.m.)

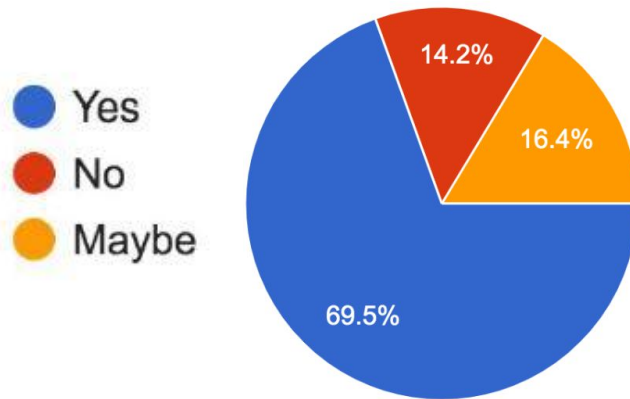


Community Outreach & Meetings

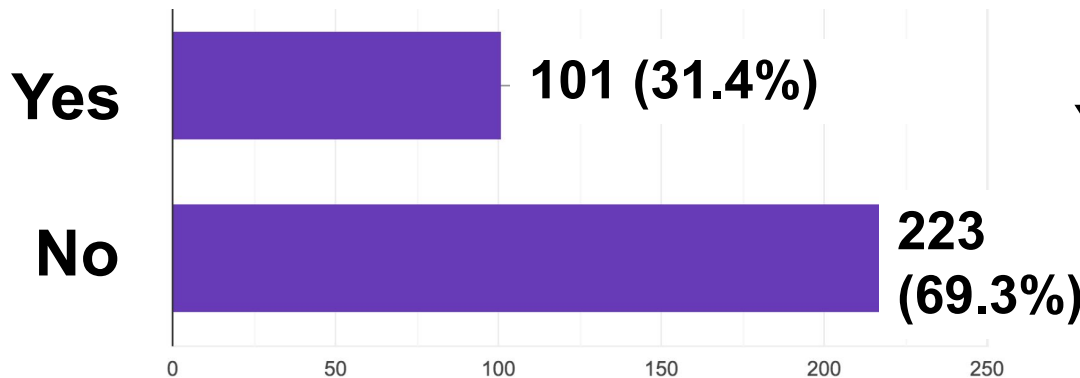
- One-on-one stakeholder meetings Aug '21 to Oct '22 including:
 - Audubon Society (Constitution Marsh)
 - Hastings Center
 - Manitou School
 - NYS DOT
 - NYS Parks
 - OSI
 - Scenic Hudson
 - St. Basil Academy
 - Town of Philipstown staff
- Public meetings
 - 10/17/22 & 11/1/22 - Neighbors & Adjoining Properties of Route 9D
 - 11/10/22 - Public Meeting
 - 1/18/23 - Philipstown Town Board Workshop
- Parent Pedestrian Survey (324 participants)

Pedestrian Safety Survey of Parents of Local Schools & Childcare Centers

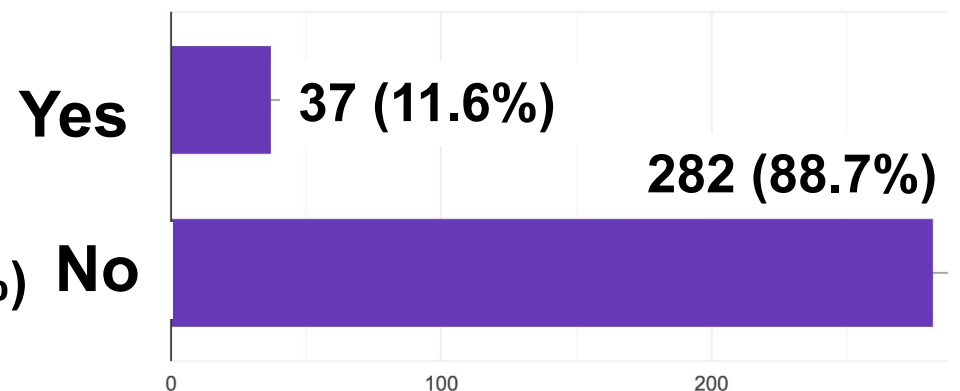
1. If you or your children could walk or bike safely to school using 9D, would you do so?



2. Do you or your children **walk** along or near 9D in order to get to school?



3. Do you or your children **bike** along or near 9D in order to get to school?

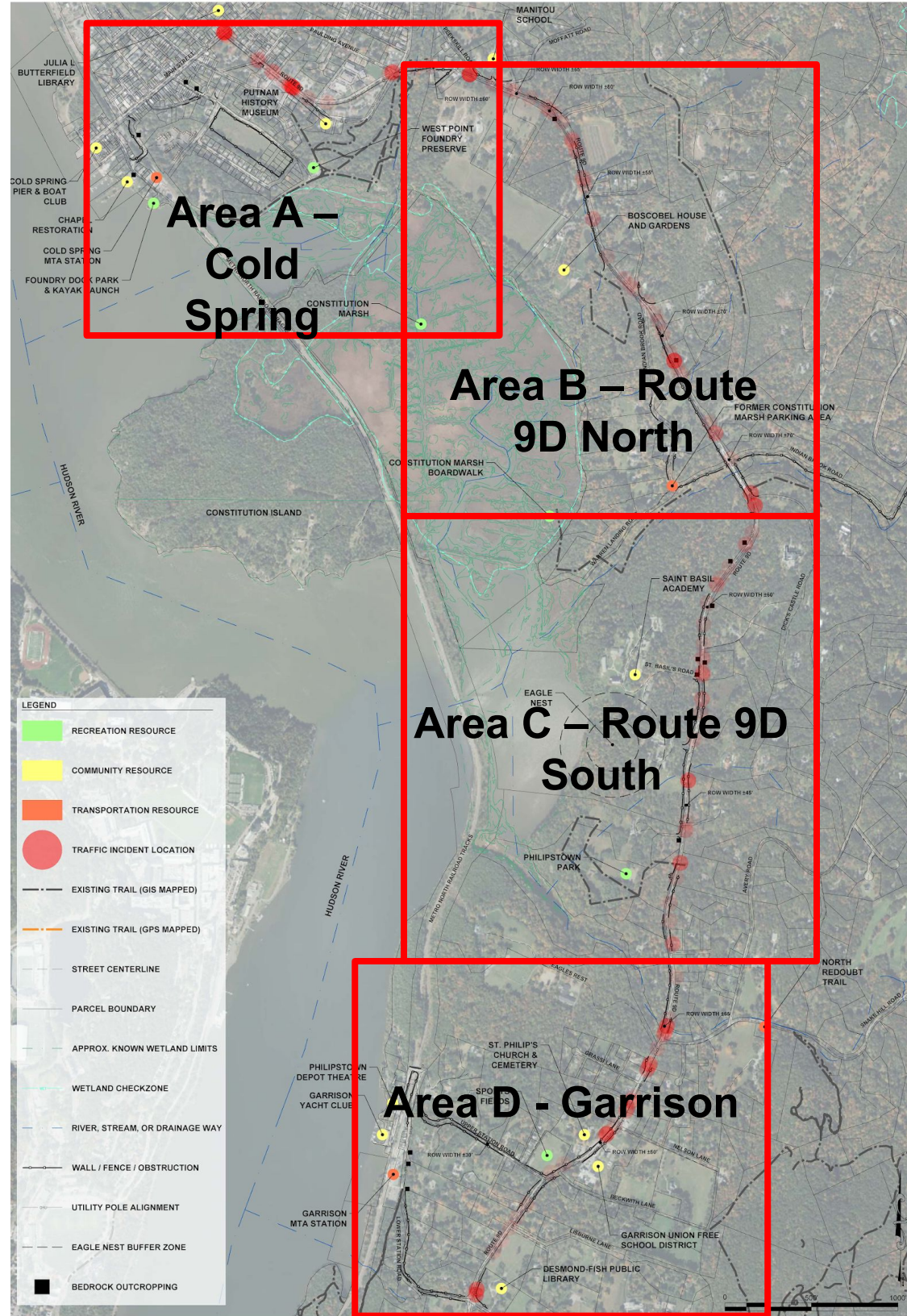


Overview of Corridor

Four Study Areas

1. Cold Spring
2. Route 9D North
3. Route 9D South
4. Garrison

Goal: To serve as many potential users/interests as possible to create community connections between Cold Spring and Garrison.



Potential Routes Area A – Cold Spring



Route A1
- Multi-Use Path
- Soft Surface

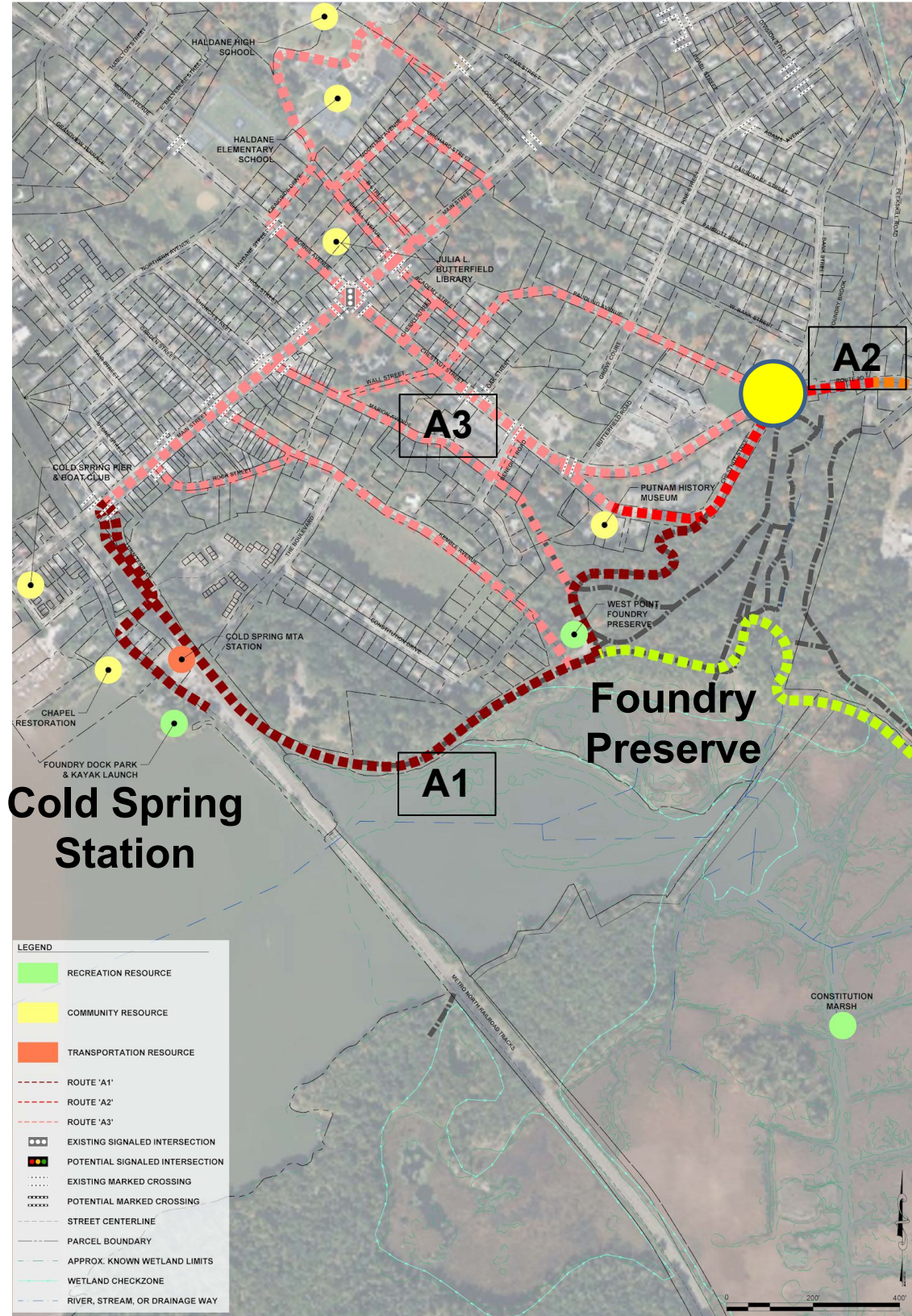
Favored Route



Route A2
- Multiuse Path/
Bridge
- Sharrows
- Bike Lanes
- Sidewalks

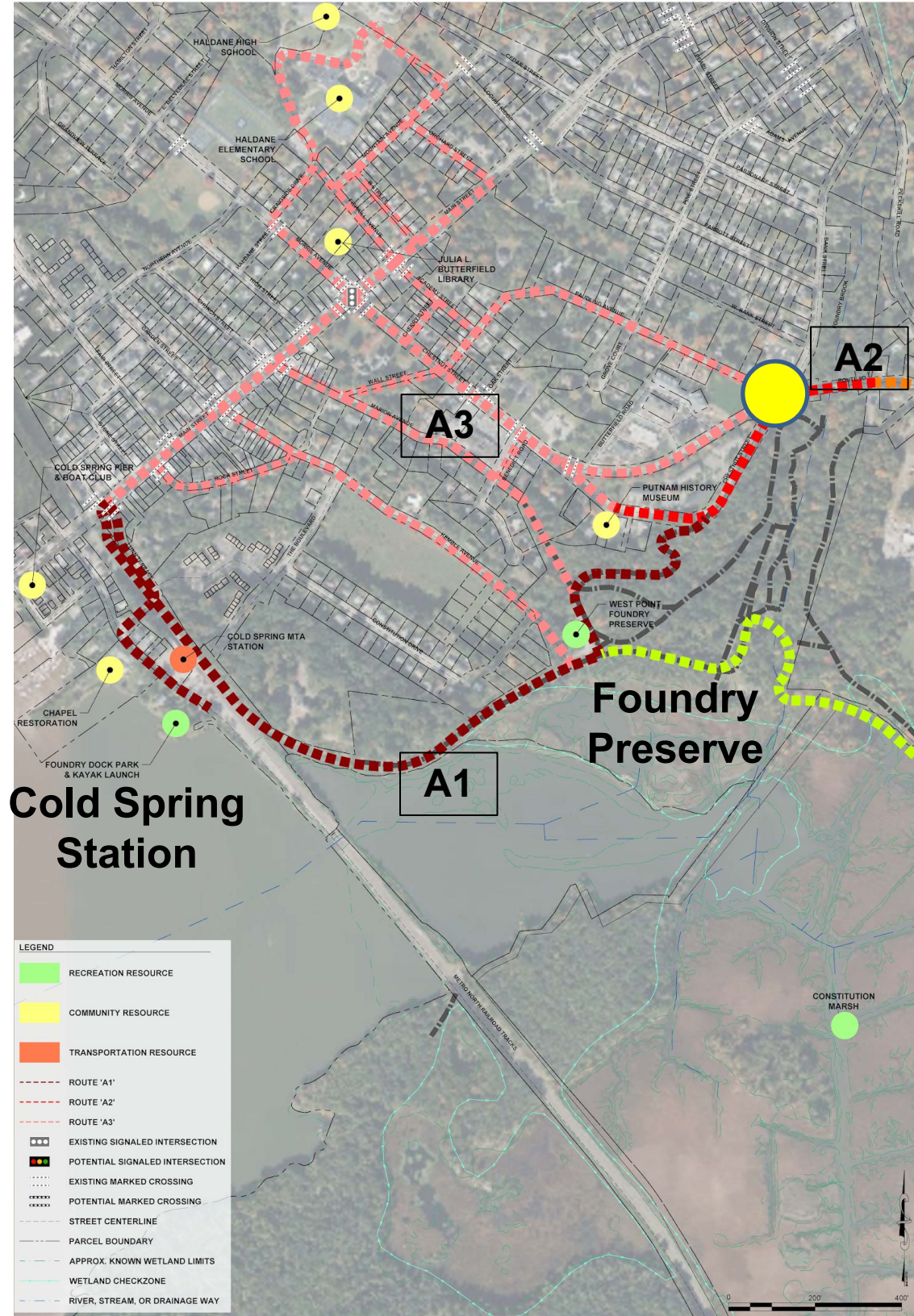


Route A3
- Sharrows
- Sidewalks



Potential Routes Area A – Cold Spring

Pros	Cons
Route A1	
Utilizes existing Foundry Preserve Trails	Current Scenic Hudson Rules requires dismounting bicyclists on some trails
Connects to Train Station & Lower Cold Spring Village	
Route A2 (*favored route)	
Connectivity to centers of Cold Spring & Nelsonville amenities	Does not facilitate Complete Streets improvements in Cold Spring
Flatter terrain, promotes accessibility	Requires bridge over Foundry Brook
Route A3	
Provides on-street connectivity within Cold Spring	“Sharrows” don’t provide off-road accommodations
Flatter terrain, promotes accessibility	



Potential Routes Area B – Route 9D Corridor (North)

Favored Route



Route B1
- Multi-Use Path



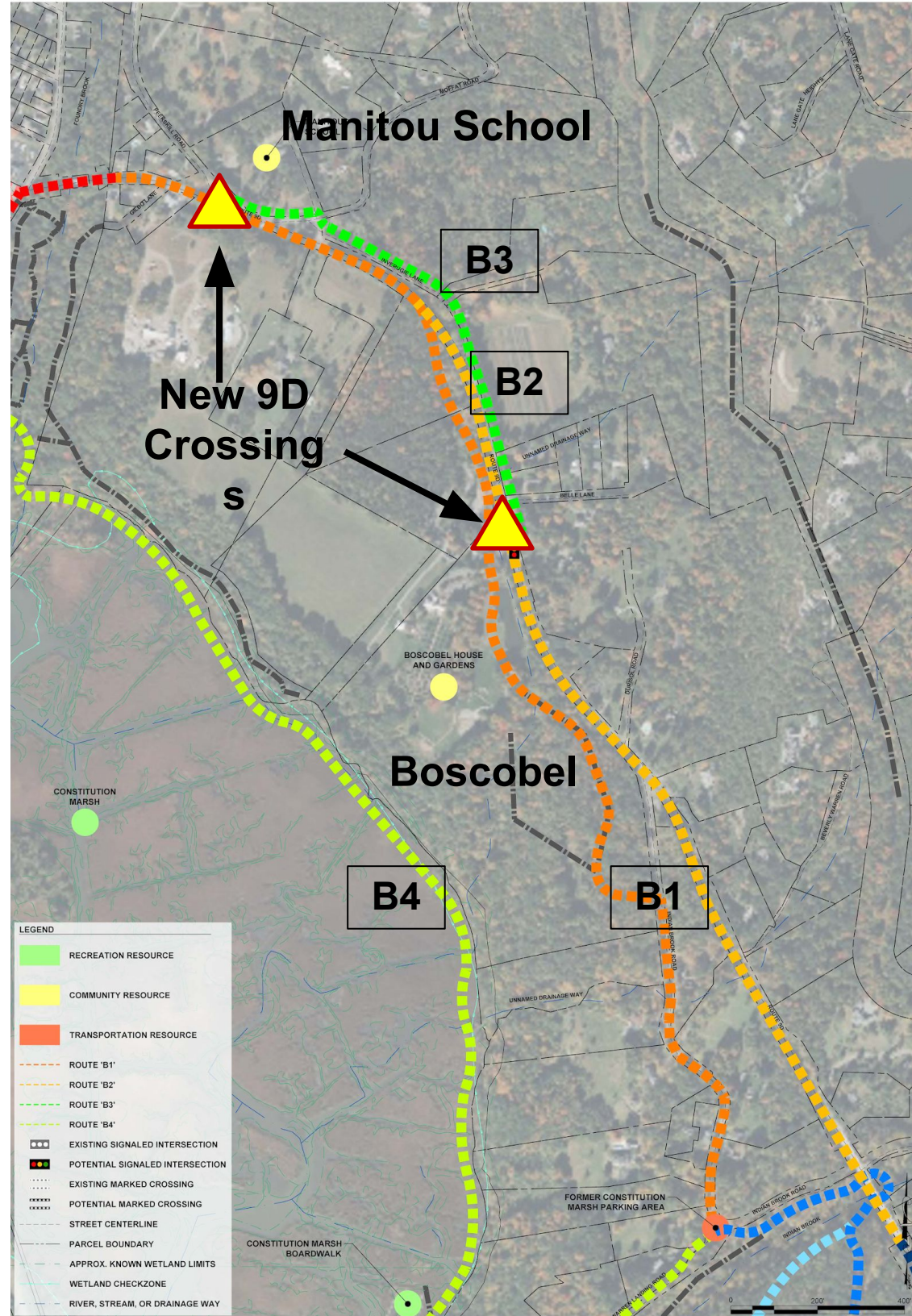
Route B2
- Bike Lanes




Route B3
- Multi-Use Path
- Sharrows
- Sidewalks




Route B4
- Multi-Use Path
- Boardwalk
- Soft Surface Trail

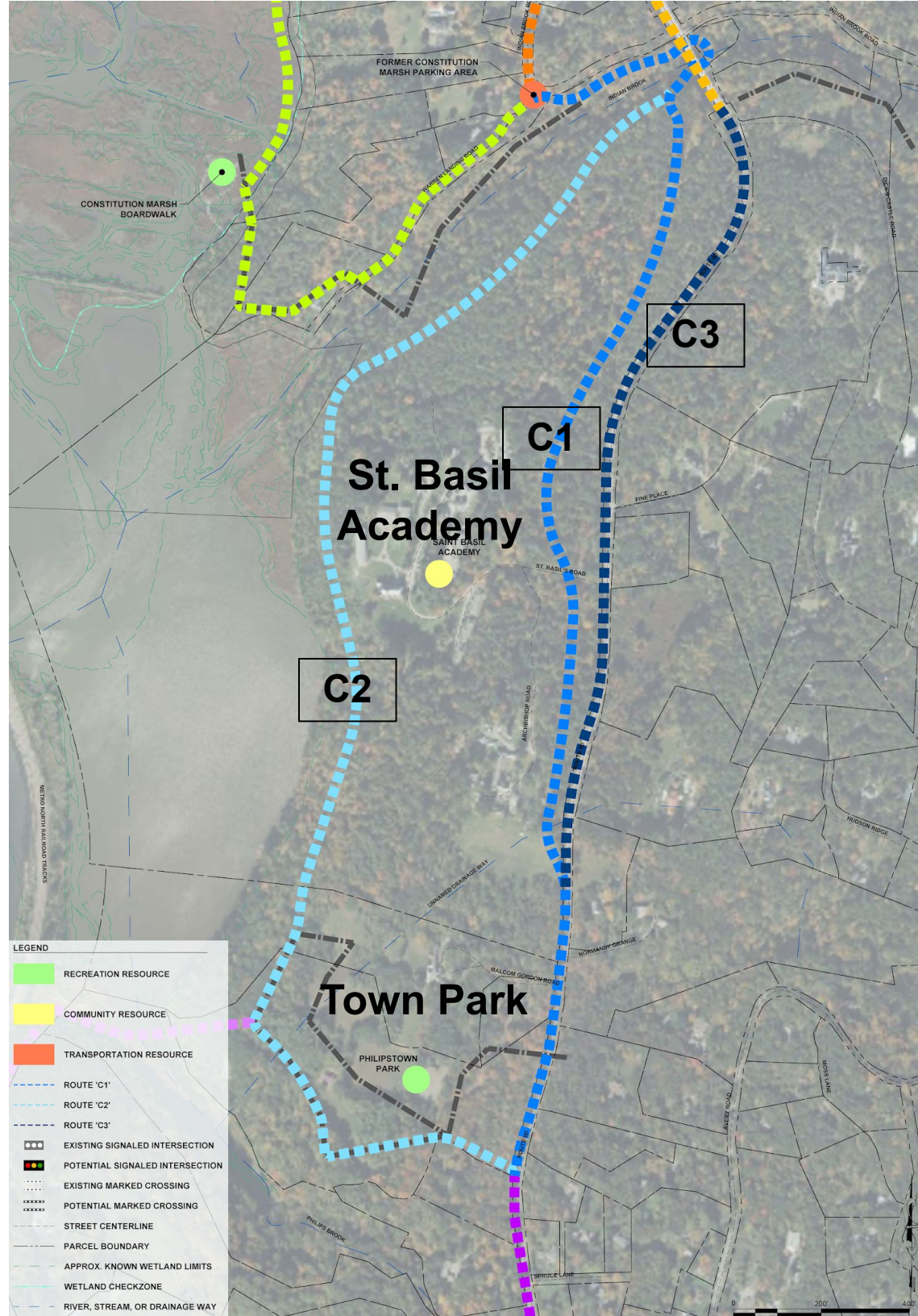


Potential Routes Area C – Route 9D Corridor (South)

 Route C1
- Multi-Use Path

 Route C2
- Multi-Use Path
- Soft Surface Trail


 Route C3
- Multi-Use Path

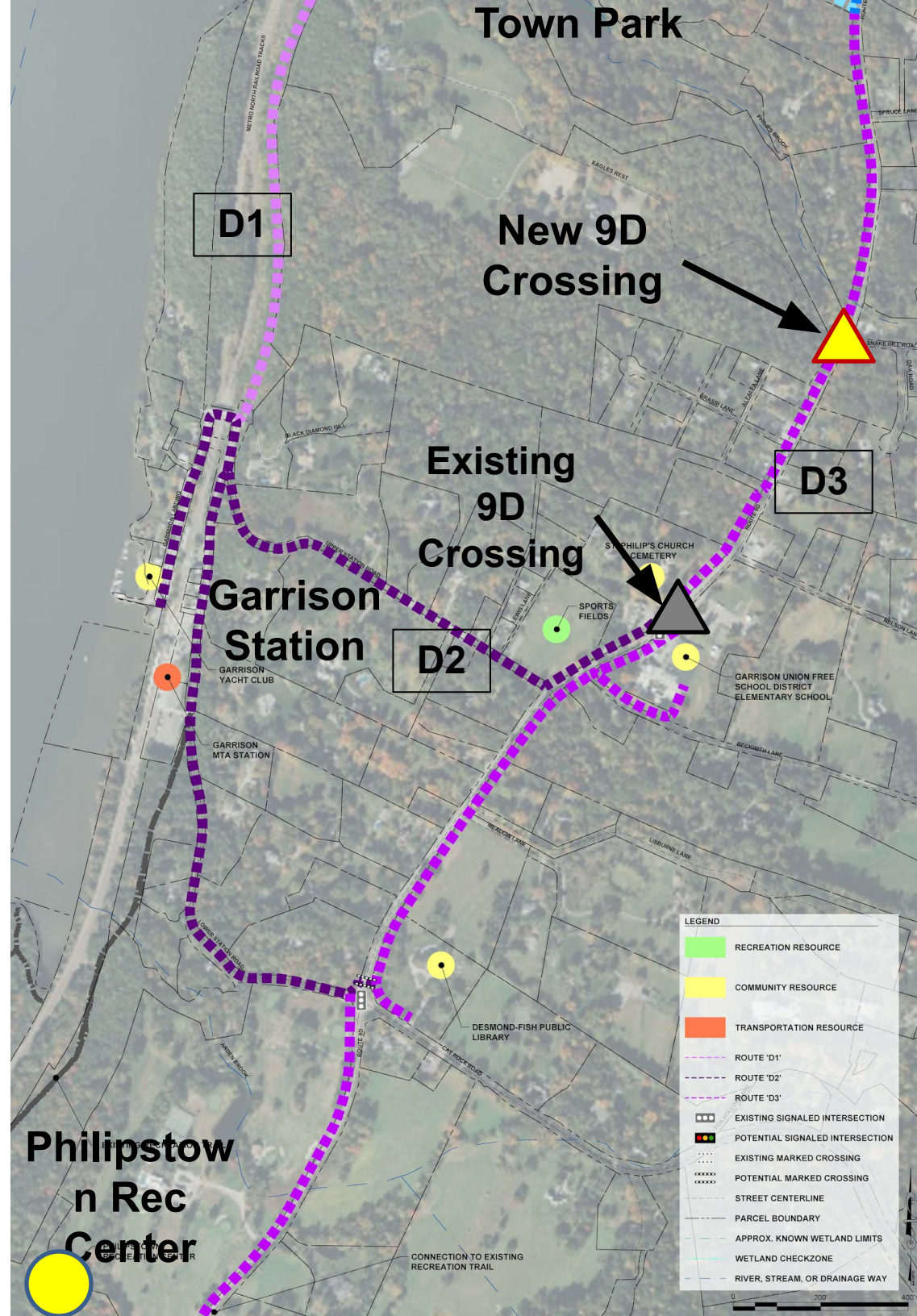


Potential Routes Area D – Garrison

 Route D1
- Multi-Use Path

 Route D2
- Sharrows

Favored Route
 Route D3
- Multi-Use Path
- Sharrows
- Sidewalks



Key Takeaways from Community Feedback



Key Takeaways:

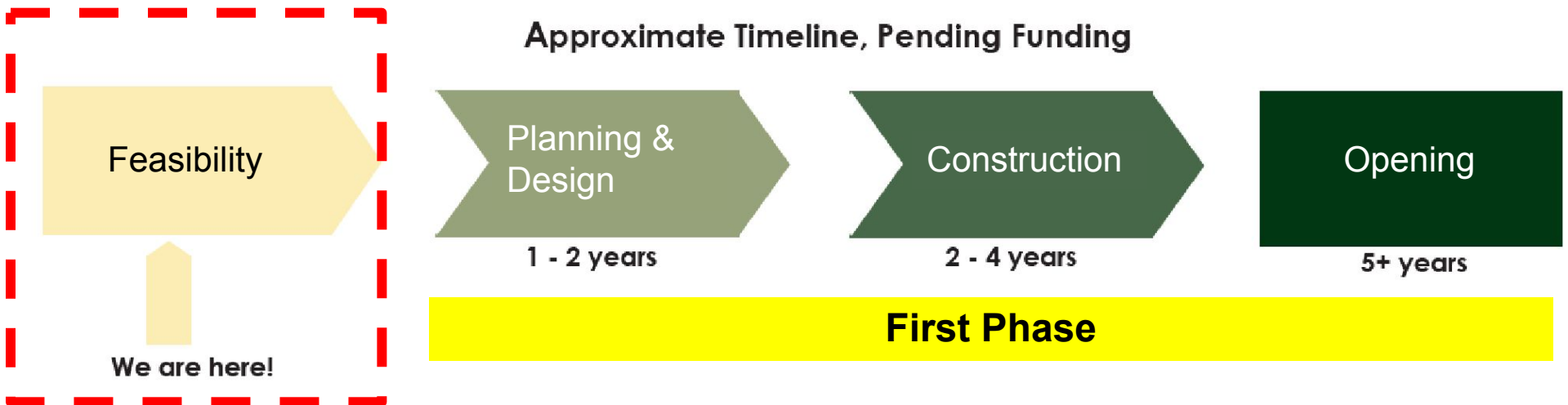
Significant Community Support

- There is broad support for a path that links neighborhoods and community resources (schools, libraries, farmer's market, grocery store, etc.)
- People see a variety of uses - both for the full path and shorter segments
- Any path that is built should be accessible for people of all ages and abilities and different types of users (runners, walkers, bikers, etc.)
- It should improve current conditions which many residents view as unsafe

Key Takeaways: Concerns & Considerations

- Property owners along proposed route had unique concerns
 - Impact to personal property
 - Safety to themselves and path users in the context of traffic speed, blind corners, driveway access, etc.
- Others voiced concern about use and overuse
 - Will a path attract more non-residents?
 - Is a path consistent with protecting sensitive ecological areas?
 - Will enough people use the path to warrant the effort to create it?
- One path cannot solve all safety and transportation concerns, there is a need for more Town focus on this issue

Project Timeline



Thank You

Questions & Comments

philipstowntrails@gmail.com

www.philipstowntrails.org



Weston & SampsonSM
transform your environment