



# Metro-North Railroad

## Upper H&H Station Priority Repairs

June 17, 2022



## Scope of Work:

The Upper Hudson and Upper Harlem (Upper H&H) Station Priority Repairs is a project to bring eighteen (18) Metro-North Railroad stations to a state of good repair.

### Repairs at Garrison and Cold Spring include:

- Full replacement of track-side and field-side platform edges
- Replacement or Rehabilitation of piers
- Spall and Crack repair
- Railing Installation
- ADA Tactile Warning Surface Installation

## Deterioration:

- Most platforms were constructed in the **1980s** and no major rehabilitation has been performed since.
- Most platform edges **lack a drip edge**, allowing salt water to flow back and penetrate the concrete.
- This causes **corrosion** of the steel rebar and deterioration of the platform concrete.

**Garrison**

**THE FOLLOWING IS AN EXAMPLE OF  
TYPICAL PLATFORM DETERIORATION**



Corroded rebar and  
deteriorated concrete



# Execution of the Work:

## Duration

June 2022 through October 2022

## Work Windows

Continuous Weekend Track Outage of 52 Hours (11 PM Friday thru 4 AM Monday) utilizing a Special Schedule to replace platform edges adjacent to track. All train traffic to operate on the opposite track.

## Parking Impacts

Reduction in parking (diagrams to follow):

- 8 parking spots removed from service at Garrison – the rest are shifted
- 22 parking spots removed from service at Cold Spring – no clearance for lane shift

## Other Impacts

Construction noise is anticipated during working hours.

# Station Parking:

## Garrison

### Parking Utilization Report Monthly Averages Garrison



April-22

Date	Day of Week	195 Permit			89 Meter			7 POM			Total	Violations	Refunds	Meters	Meters
		Total	Empty	Utilization	Total	Empty	Utilization	Total	Empty	Utilization	Utilization	Issued	Issued	Total	Malfunctions
4/1/2022	FRI										0				
4/2/2022	SAT														
4/3/2022	SUN														
4/4/2022	MON	195	152	22%	89	55	38%	7	5	29%	27%	0	\$0.00	2	0
4/5/2022	TUE	195	153	22%	89	57	36%	7	6	14%	26%	0	\$0.00	2	0
4/6/2022	WED	195	150	23%	89	55	38%	7	5	29%	28%	0	\$0.00	2	0
4/7/2022	THU	195	149	24%	89	54	39%	7	6	14%	28%	0	\$0.00	2	0
4/8/2022	FRI										0				
4/9/2022	SAT														
4/10/2022	SUN														
4/11/2022	MON	195	178	9%	89	73	18%	7	7	0%	11%	0	\$0.00	2	0
4/12/2022	TUE	195	166	15%	89	74	17%	7	6	14%	15%	0	\$0.00	2	0
4/13/2022	WED	195	158	19%	89	41	54%	7	7	0%	29%	0	\$0.00	2	0
4/14/2022	THU	195	167	14%	89	73	18%	7	6	14%	15%	1	\$0.00	2	0
4/15/2022	FRI	195	177	9%	89	74	17%	7	7	0%	11%	0	\$0.00	2	0
4/16/2022	SAT														
4/17/2022	SUN														
4/18/2022	MON	195	141	28%	89	36	60%	7	7	0%	37%	0	\$0.00	2	0
4/19/2022	TUE	195	142	27%	89	50	44%	7	6	14%	32%	0	\$0.00	2	0
4/20/2022	WED	195	145	26%	89	36	60%	7	7	0%	35%	0	\$0.00	2	0
4/21/2022	THU	195	142	27%	89	35	61%	7	7	0%	37%	0	\$0.00	2	0
4/22/2022	FRI	195	143	27%	89	48	46%	7	5	29%	33%	0	\$0.00	2	0
4/23/2022	SAT														
4/24/2022	SUN														
4/25/2022	MON	195	141	28%	89	50	44%	7	5	29%	33%	0	\$0.00	2	0
4/26/2022	TUE	195	155	21%	89	60	33%	7	7	0%	24%	0	\$0.00	2	0
4/27/2022	WED	195	155	21%	89	61	31%	7	5	29%	24%	0	\$0.00	2	0
4/28/2022	THU	195	148	24%	89	30	66%	7	6	14%	37%	0	\$0.00	2	0
4/29/2022	FRI	195	142	27%	89	51	43%	7	4	43%	32%	0	\$0.00	2	0
4/30/2022	SAT														
<b>Total</b>		<b>3705</b>	<b>2904</b>	<b>22%</b>	<b>1691</b>	<b>1013</b>	<b>40%</b>	<b>133</b>	<b>114</b>	<b>14%</b>	<b>27%</b>	<b>1</b>	<b>\$0.00</b>	<b>38</b>	<b>0</b>

# 27% Utilization

**MTA Usage Calculation:**

Permit Spaces used **801** times in **19** days Usage = **42**  
 Meter Spaces used **678** times in **19** days Usage = **36**  
 POM Spaces used **19** times in **19** days Usage = **1**

Estimated - No Enforcement  
 No Enforcement  
 Holiday

**TOTAL USAGE 27.1%**



# Station Parking:

# Cold Spring

## Parking Utilization Report Monthly Averages Cold Spring



April-22

Date	Day of Week	128 Permit			88 Meter			7 POM			Total	Violations	Refunds	Meters	Meters
		Total	Empty	Utilization	Total	Empty	Utilization	Total	Empty	Utilization	Utilization	Issued	Issued	Total	Malfunctions
4/1/2022	FRI										0				
4/2/2022	SAT														
4/3/2022	SUN														
4/4/2022	MON	128	74	42%	88	53	40%	7	5	29%	41%	0	\$0.00	2	0
4/5/2022	TUE	128	99	23%	88	43	51%	7	7	0%	33%	0	\$0.00	2	0
4/6/2022	WED	128	73	43%	88	52	41%	7	6	14%	41%	0	\$0.00	2	0
4/7/2022	THU	128	72	44%	88	51	42%	7	5	29%	43%	0	\$0.00	2	0
4/8/2022	FRI											0			
4/9/2022	SAT														
4/10/2022	SUN														
4/11/2022	MON	128	111	13%	88	52	41%	7	5	29%	25%	0	\$0.00	2	0
4/12/2022	TUE	128	74	42%	88	30	66%	7	5	29%	51%	0	\$0.00	2	0
4/13/2022	WED	128	88	31%	88	35	60%	7	6	14%	42%	0	\$0.00	2	0
4/14/2022	THU	128	75	41%	88	31	65%	7	5	29%	50%	0	\$0.00	2	0
4/15/2022	FRI	128	110	14%	88	50	43%	7	5	29%	26%	0	\$0.00	2	0
4/16/2022	SAT														
4/17/2022	SUN														
4/18/2022	MON	128	83	35%	88	40	55%	7	5	29%	43%	0	\$0.00	2	0
4/19/2022	TUE	128	94	27%	88	57	35%	7	2	71%	31%	0	\$0.00	2	0
4/20/2022	WED	128	80	38%	88	41	53%	7	5	29%	43%	0	\$0.00	2	0
4/21/2022	THU	128	82	36%	88	39	56%	7	6	14%	43%	0	\$0.00	2	0
4/22/2022	FRI	128	92	28%	88	59	33%	7	3	57%	31%	0	\$0.00	2	0
4/23/2022	SAT														
4/24/2022	SUN														
4/25/2022	MON	128	94	27%	88	60	32%	7	4	43%	29%	0	\$0.00	2	0
4/26/2022	TUE	128	84	34%	88	57	35%	7	6	14%	34%	0	\$0.00	2	0
4/27/2022	WED	128	86	33%	88	58	34%	7	5	29%	33%	0	\$0.00	2	0
4/28/2022	THU	128	86	33%	88	37	58%	7	7	0%	42%	0	\$0.00	2	0
4/29/2022	FRI	128	95	26%	88	61	31%	7	5	29%	28%	0	\$0.00	2	0
4/30/2022	SAT														
<b>Total</b>		<b>2432</b>	<b>1652</b>	<b>32%</b>	<b>1672</b>	<b>906</b>	<b>46%</b>	<b>133</b>	<b>97</b>	<b>27%</b>	<b>37%</b>	<b>0</b>	<b>\$0.00</b>	<b>38</b>	<b>0</b>

# 37% Utilization

**MTA Usage Calculation:**

Permit Spaces used 780 times in 19 days Usage = 41  
 Meter Spaces used 766 times in 19 days Usage = 40  
 POM Spaces used 36 times in 19 days Usage = 2

Estimated - No Enforcement  
 No Enforcement  
 Holiday

**TOTAL USAGE 37.2%**

## Execution of the Work:

### June thru July

Preparatory work for platform edge replacement.

### July 22 Weekend and August 5 Weekend

Demolition and installation of new platform edge for Track 1.

### July 29 Weekend and August 12 Weekend

Demolition and installation of new platform edge for Track 2.

### August thru October

Demolition and installation of new platform edges (field sides) and all other scheduled station work that does not require track outages.

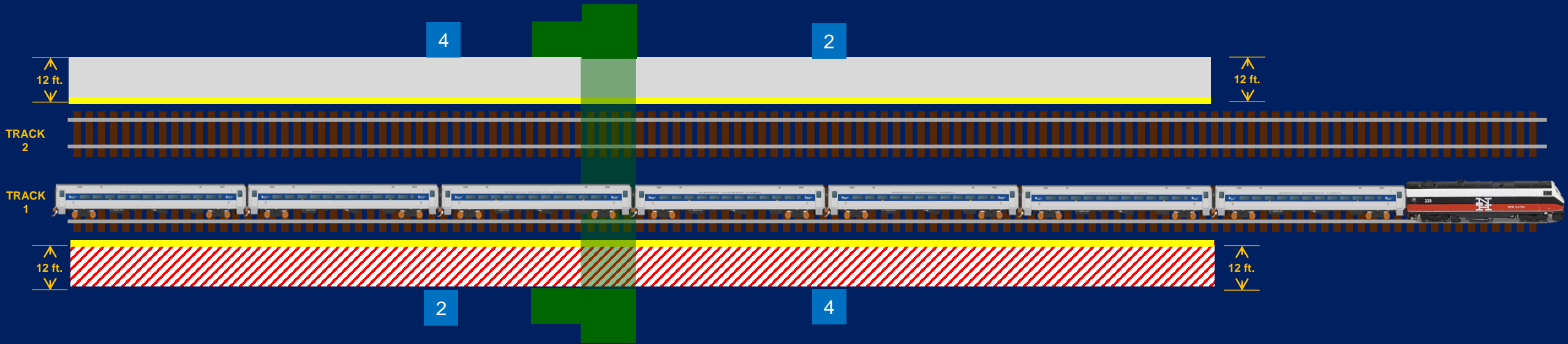


# Track-Side Edge Replacement: Track 1

**Garrison**

**Cold Spring**

~ 510 LF



**Notes:**

- Contractor shall work Friday at 11:00 PM thru Monday 4:00 AM (52 hours)

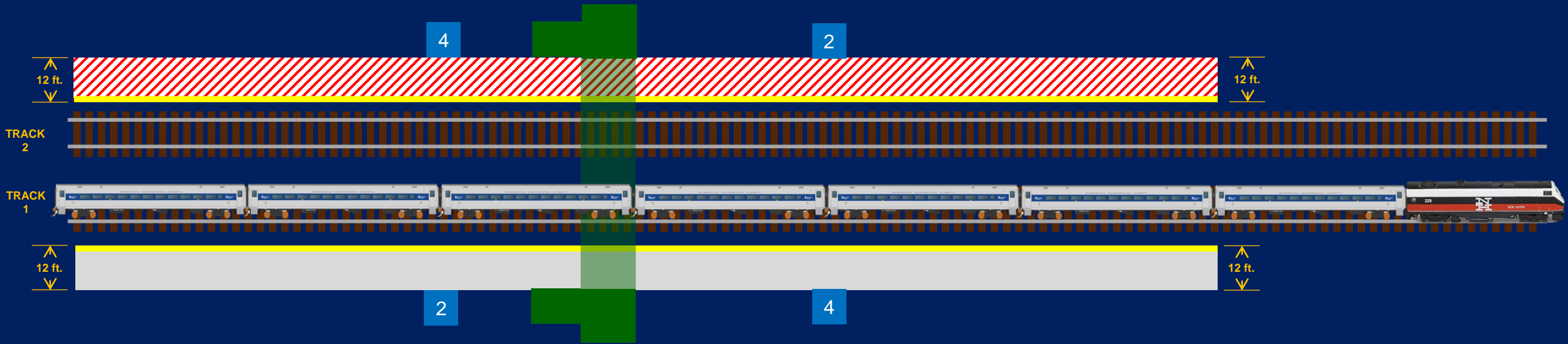


# Track-Side Edge Replacement: Track 2

**Garrison**

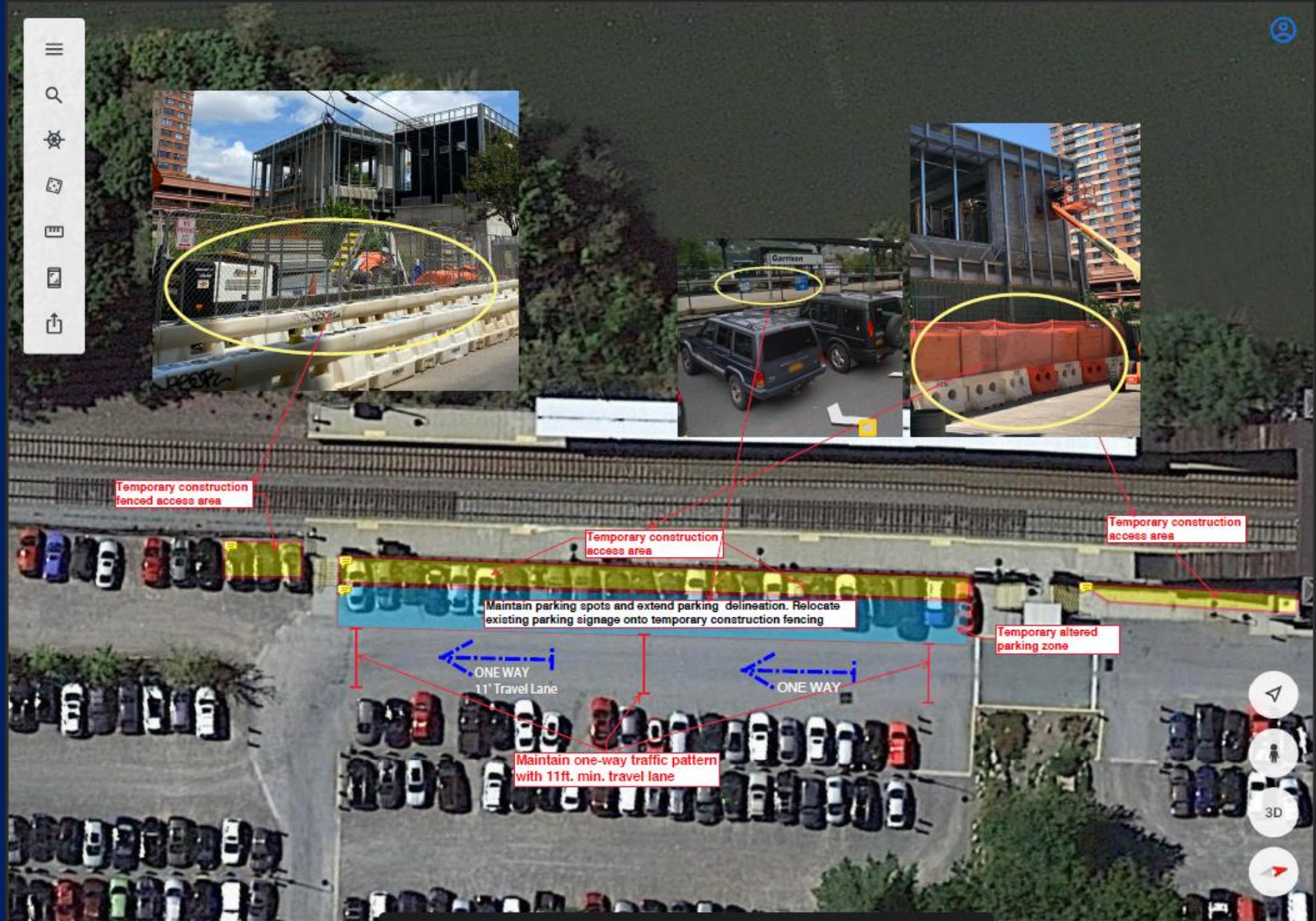
**Cold Spring**

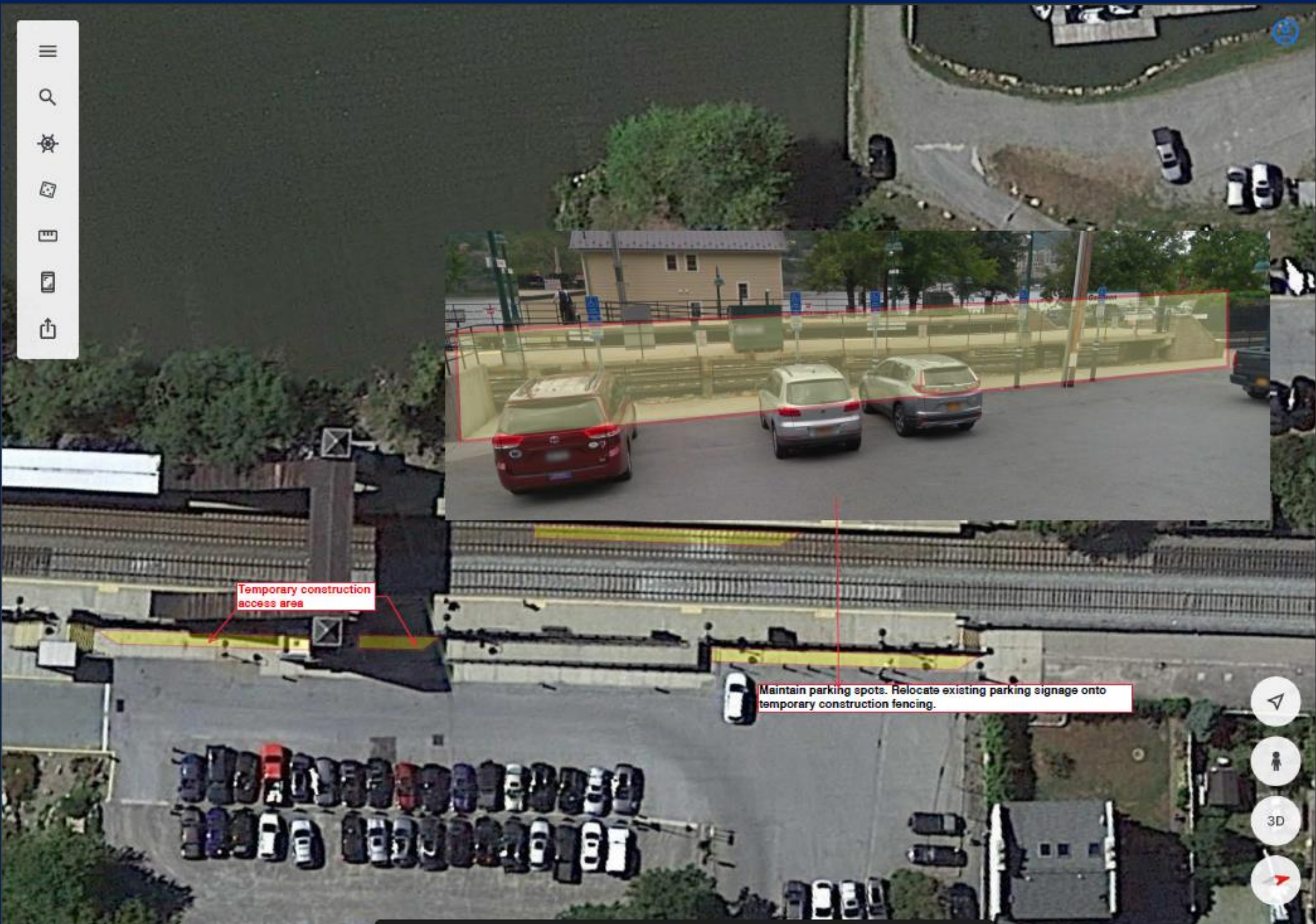
~ 510 LF



### Notes:

- Contractor shall work Friday at 11:00 PM thru Monday 4:00 AM (52 hours)





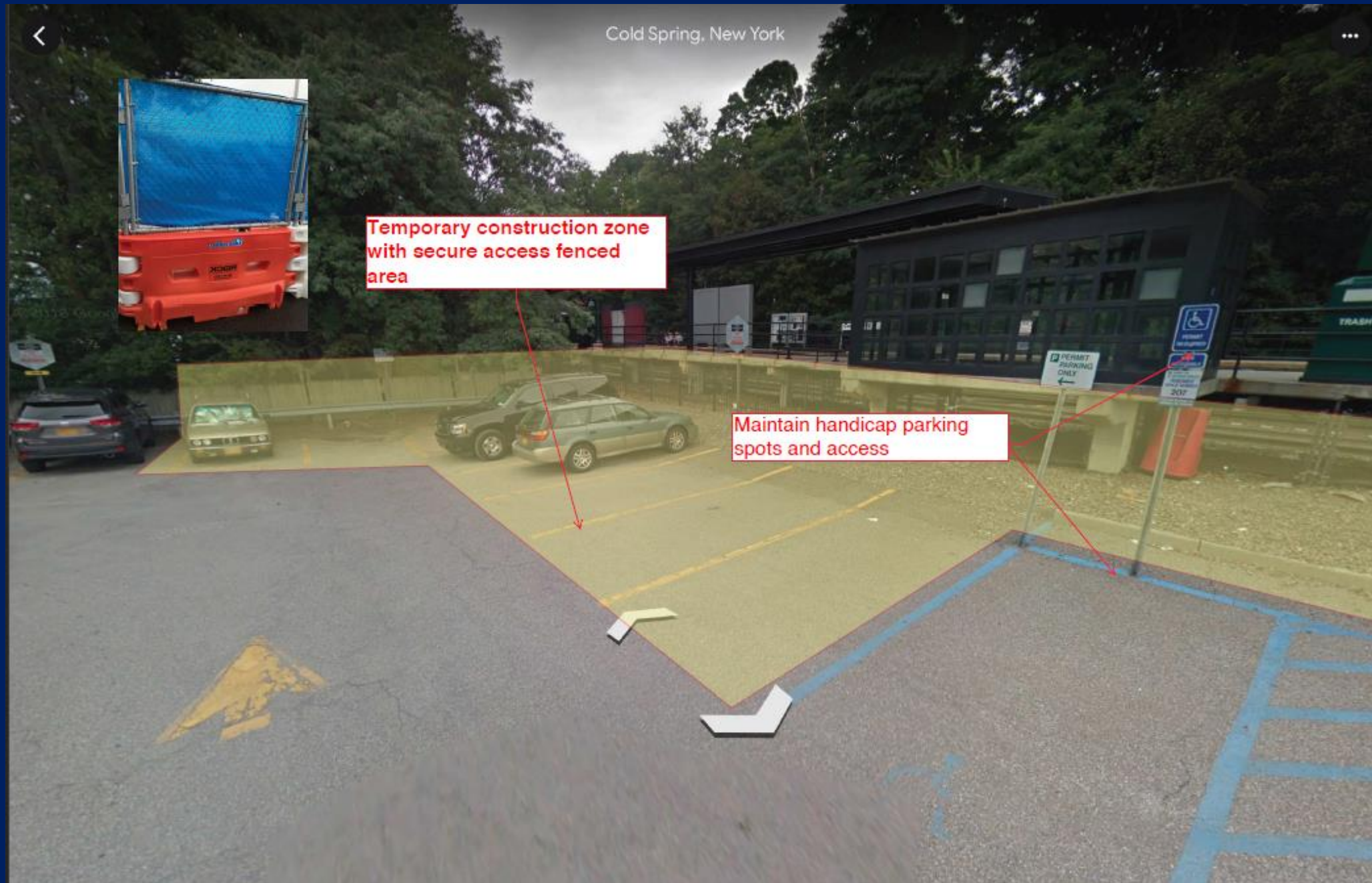


Temporary fenced construction access area

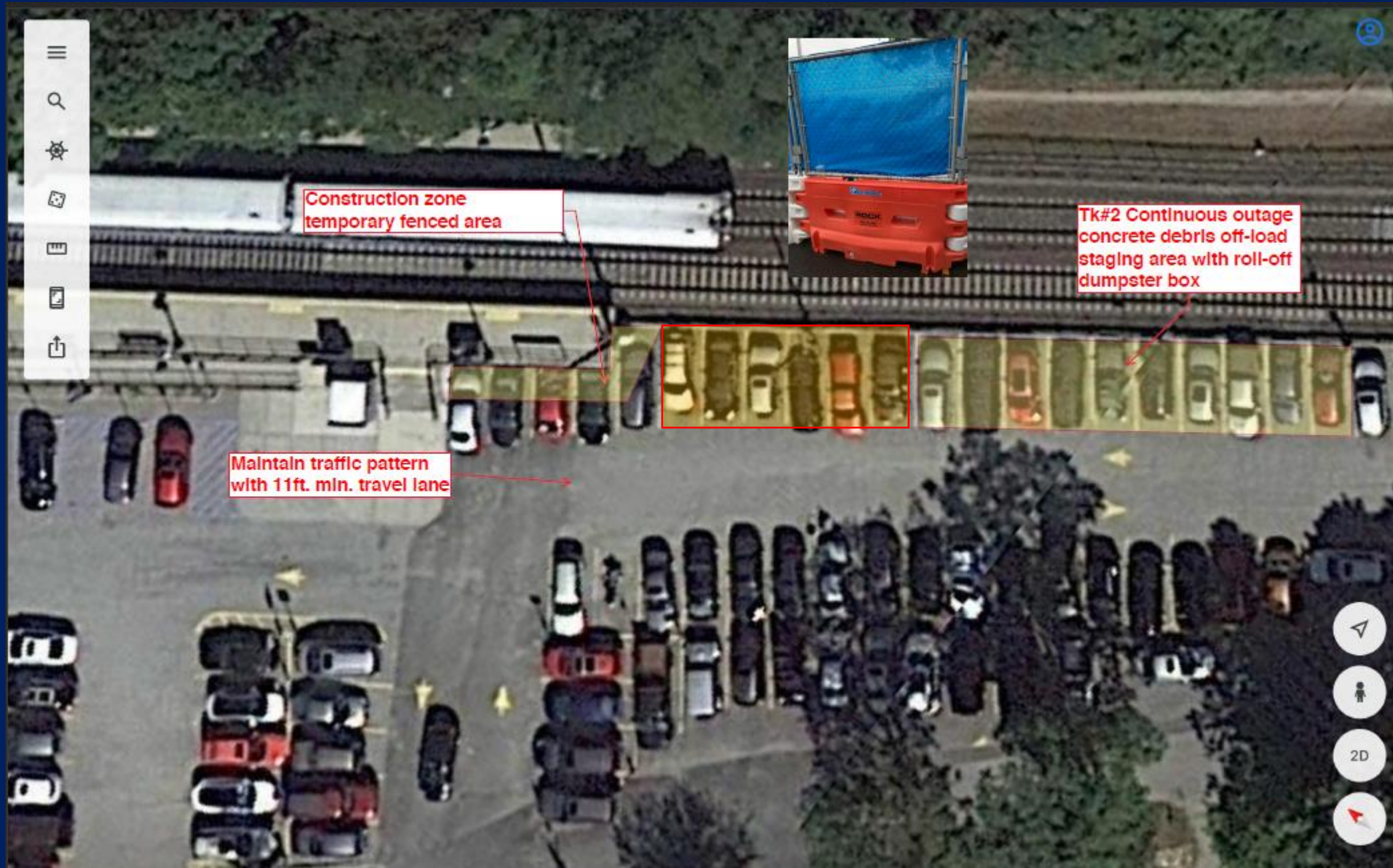


Maintain one-way traffic pattern with 11ft. min. travel lane









Construction zone temporary fenced area



Tk#2 Continuous outage concrete debris off-load staging area with roll-off dumpster box

Maintain traffic pattern with 11ft. min. travel lane

# THANK YOU!

## Questions?

